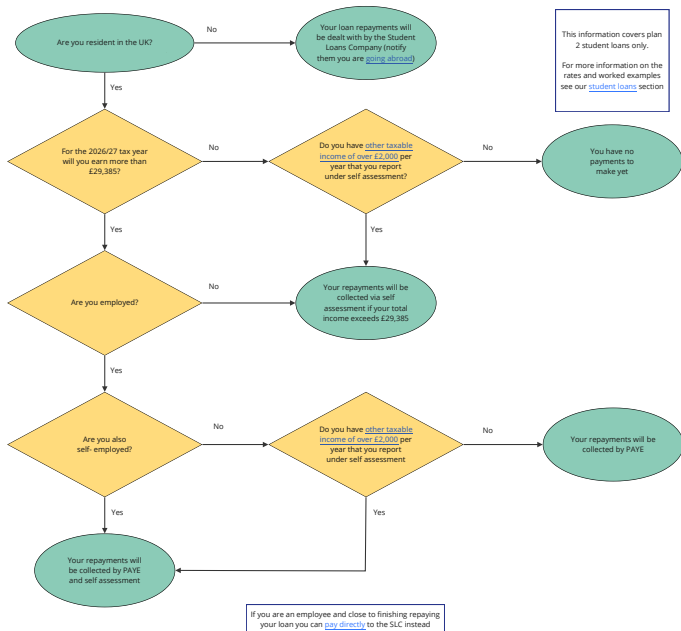


How do I repay my plan 2 student loan?



Reproduction, copying or extracting by any means of the whole or part of this flowchart must not be undertaken without the written permission of CIOT. This flowchart is intended to be a general guide and cannot be a substitute for professional advice. CIOT shall not accept any responsibility for loss occasioned to any person acting or refraining from acting as a result of guidance contained in this flowchart. You can read our full disclaimer on our website: www.litr.org.uk/about-us/legal

© 2026 The Low Incomes Tax Reform Group:

an initiative of the Chartered Institute of Taxation (Registered Charity number 1037771)

For more information please visit www.litr.org.uk